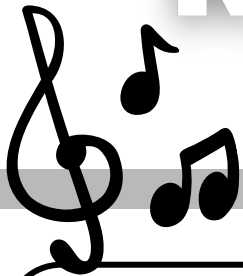


# SDML GRADE 6 BAND REGISTRATION

[www.rdparkermusic.com](http://www.rdparkermusic.com)



## THE GRADE 6 BAND

- Is open to all students, regardless of previous musical experience
- Continues until Grade 12
- Provides the opportunity for SDML students to learn a musical instrument, be a part of a team, and much more

## FALL REGISTRATION

If you missed registration in the spring, please come to our final Choose Your Instrument night to enroll in band. There, you will get to try the different instrument options and choose what to play this year!

### Choose Your Instrument Night

Thursday, September 21

5:00-8:00

RDPC Letkemann Theatre

Just drop in during those hours. We look forward to seeing you!

## SCHEDULE

### Lessons at Your School\*

- Day 1 - Burntwood (1st day Oct 2)
- Day 2 - Riverside (1st day Oct 4)
- Day 3 - Westwood (1st day Oct 5)
- Day 4 - Deerwood (1st day Sept 27)
- Day 5 - Juniper (1st day Sept 28)
- Day 6 - Wapanohk (1st day Sept 29)

\*Percussion Lessons : Mondays 3:45-4:30 at RDPC - First Day Oct 2  
(Percussion will stay until 5:00 once the full band starts rehearsing at RDPC in November)

### Full Band Classes at RDPC

These will start in November once we've had some time on our new instruments:

- Flute, Clarinet, Percussion - Mondays 3:45-4:30
  - first full rehearsal November 13
- Trumpet, Trombone, Euphonium, Bass - Wednesdays 8AM - 8:40
  - first full rehearsal November 15

## CONTACT

Mrs. Lewis  
Grade 6 & 7 Band Director  
204-677-6222  
slewis@mysterynet.mb.ca



# CHOOSING INSTRUMENTS & LOOKING AHEAD



## GRADE 6 INSTRUMENTS

In the first year, students can choose from the instruments below, after attending Choose Your Instrument Night and testing out different mouthpieces to make an informed decision about next year.

- Flute
- Clarinet
- Trumpet
- Trombone
- Euphonium
- Electric Bass\*
- Percussion\*

\*Percussion spots are limited to 3, and Electric Bass to 2, due to equipment considerations. Piano experience and the ability to read music are highly recommended for success with Percussion or Electric Bass. Please email [slewis@mysterynet.mb.ca](mailto:slewis@mysterynet.mb.ca) directly if you are interested.



## WHY JOIN BAND?

Play music! In our program, students will develop practical musical skills, both through self-discipline and while working together as a team. Making music with others is a rewarding (and fun) experience! Students will have the opportunity for a new social connection beyond their elementary school that continues in our program through Grade 12.

Scientific Research also tells us: that learning to play an instrument and read music contributes significantly to adolescent development of language & motor skills, collaboration skills, and emotional intelligence.

High School: Concert Band is a full-credit elective course from Gr 9-12. Jazz Band is also offered as a credit course for Gr 9-12 Concert Band students.

Travel: There will be many opportunities to travel & perform as a band. Recent RDPC Music destinations include Southern Manitoba, Edmonton, Banff, Minneapolis and Orlando! In a typical year Grade 10-12 music students have the opportunity to travel. Some travel in Grade 7-9 happens as well, dependent on the year and the ensemble.

## SECONDARY INSTRUMENTS

Most students will choose one instrument and remain on it in the years going forward. If you are interested in any of the instruments below, see what you would need to play this year. Students who switch later on must have regular attendance and be doing well on their instruments, as we want them to be ready to take on the challenge of starting over on new instrument.

### Interested in:

- Saxophone or Bass Clarinet in Grade 7? You would need to play Clarinet this year if interested.
- Tuba in high school? Trombone or euphonium this year.
- French Horn in high school? Trumpet this year.



# MATERIALS NEEDED



## INSTRUMENT SUPPLIES

Students will purchase a band method book at their first class for \$15 that we will use throughout the year. The following supplies should also be purchased through a music store to ensure proper care & maintenance of your instrument:

### Flute:

- Hanky swab

### Clarinet:

- Hanky swab, cork grease, reed saver, & 10 reeds (Rico Royal clarinet reeds, 2.5 strength)

### Trumpet & Euphonium:

- Valve oil & slide grease

### Trombone:

- Slide Grease, & Slide cream or Slide-o-Mix

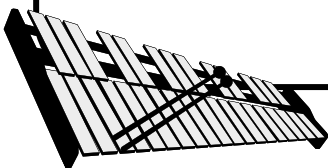
### Electric Bass:

- Tuner and patch cord

## CONCERTS & ATTIRE

The Grade 6 Band performs at 7PM December 13 @ June 11 in the Letkemann Theatre at RDPC. Students are asked to wear the following concert attire:

- Black Dress Shirt
- Black Dress Pants
- Black Shoes
- Black Socks



## A QUALITY INSTRUMENT

Students in the SDML Band Program will need to acquire their own instrument after choosing what to play. We strongly recommend ordering your instrument from St. Johns Music or Long & McQuade Music. These stores carry quality brands that will hold up over time and sound great.

Please beware: you will find a lot of “bargains” online, but these low-priced instruments play out of tune and are made of weak materials. Their moving parts often bend and break easily, in which case they most often are not repairable. Spending a bit more money on a quality instrument will pay off with years of enjoyment on a beautiful sounding instrument, and help prevent early frustration for a beginner musician!

Feel free to contact me if you have any questions about instrument brands.

\*Please note - If you want to register for band but can't spend the money on an instrument, please give me a call at (204)677-6222. We have a limited number of instruments available to lend to families in need, though your choice of instrument may be limited in these cases.

After attending Choose Your Instrument night, Scan the Code to order your instrument with St. John's or Long & McQuade!

