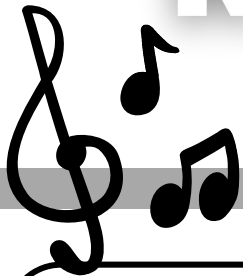


SDML GRADE 6 BAND REGISTRATION

www.rdparkermusic.com



THE GRADE 6 BAND

- Is open to all students, regardless of previous musical experience
- Continues until Grade 12
- Provides the opportunity for SDML students to learn a musical instrument, be a part of a team, and much more

REGISTRATION DATES

Attend Choose Your Instrument Night to register. There, you will get to try the different instrument options and choose what to play.

#1 - Choose Your Instrument Night

Wednesday & Thursday, Sept 18 & 19

5:30-8:30

RDPC Band Room

After CYI night, attend our Music Store night to order an instrument with Long & McQuade OR use the QR code to order online.

#2 - Music Store Rental Night

Wednesday & Thursday, Sept 25 & 26

5:30-8:30PM

RDPC Band Room

SCHEDULE

Lessons at Your School

- Day 1 - Burntwood (1st day Oct 1)
- Day 2 - Riverside (1st day Oct 2)
- Day 3 - Westwood (1st day Oct 3)
- Day 4 - Deerwood (1st day Oct 4)
- Day 5 - Juniper (1st day Oct 7)
- Day 6 - Wapanohk (1st day Oct 8)

Full Band Classes at RDPC

These will start later in November, once we have built some skills to play together. We rehearse:

- 6A Class (BW, Jun., WW & WCS)
 - Mondays 3:45-4:30
 - Thursdays 3:45-4:30
 - first rehearsal Tue. Nov 18
- 6B Class (DW & RS)
 - Wednesdays 8AM - 8:40
 - Thursdays 3:45-4:30
 - first rehearsal Wed. Nov 20

CONTACT

Mrs. Lewis
Grade 6 & 7 Band Director
204-677-6222
slewis@mysterynet.mb.ca



CHOOSING INSTRUMENTS & LOOKING AHEAD



GRADE 6 INSTRUMENTS

After attending Choose Your Instrument night, you will choose one of the following Grade 6 instruments:

- Flute
- Clarinet
- Trumpet
- Trombone
- Euphonium

After Grade 6 there is some opportunity to diversify – see Secondary Instruments below.



WHY JOIN BAND?

Play music! In our program, students will develop practical musical skills, both through self-discipline and while working together as a team. Making music with others is a rewarding (and fun) experience! Students will have the opportunity for a new social connection beyond their elementary school that continues in our program through Grade 12.

Science also tells us: that learning to play an instrument and read music contributes significantly to adolescent development of language & motor skills, collaboration skills, and emotional intelligence.

High School: Concert Band is a full-credit elective course from Gr 9-12. Jazz Band is also offered as a credit course for Gr 9-12 Concert Band students.

Travel: There will be many opportunities to travel & perform as a band. Recent RDPC Music destinations include Southern Manitoba, Edmonton, Banff, Minneapolis and Orlando. In a typical year Grade 10-12 music students have the opportunity to travel. Some travel in Grade 7-9 happens as well, dependent on the year and the ensemble.



SECONDARY INSTRUMENTS

Most students will choose one instrument and remain on it in the years going forward. Students who switch later on must have regular attendance and be doing very well on their instruments, as we want them to be ready to take on the challenge of starting over on new instrument.

Interested in:

- Saxophone or Bass Clarinet in Grade 7? You would need to play Clarinet this year if interested.
- Percussion in Grade 7? Any of the Grade 6 Instruments this year,
- Tuba in high school? Trombone or euphonium this year.
- French Horn in high school? Trumpet this year.



MATERIALS NEEDED



INSTRUMENT SUPPLIES

Students will purchase a band method book at their first class for \$15 that we will use throughout the year. The following supplies should also be purchased through a music store to ensure proper care & maintenance of your instrument:

Flute, Trumpet, Trombone, Euphonium

- Please order a Care Kit for your chosen instrument from Long & McQuade or St. John's Music

Clarinet:

- Please order a Care Kit for your clarinet as well as a hanky swab and 10 reeds (Rico Royal clarinet reeds, 2.5 strength)

CONCERT WEAR

The Grade 6 Band performs at 7PM December 11 & June 10 in the Letkemann Theatre at RDPC. Students are asked to wear the following concert attire:

- Black Dress Shirt
- Black Dress Pants
- Black Shoes
- Black Socks

A QUALITY INSTRUMENT

Students in the SDML Band Program will need to acquire their own instrument after choosing what to play. We strongly recommend ordering your instrument from St. Johns Music or Long & McQuade Music. These stores carry quality brands that will hold up over time and sound great.

Please beware: you will find a lot of "bargains" online, but these low-priced instruments play out of tune and are made of weak materials. Their moving parts often bend and break easily, in which case they most often are not repairable. Spending a bit more money on a quality instrument will pay off with years of enjoyment on a beautiful sounding instrument, and help prevent early frustration for a beginner musician!

Feel free to contact me if you have any questions about instrument brands.

*Please note - If you want to register for band but can't spend the money on an instrument, please give me a call at (204)677-6222. We have a limited number of instruments available to lend to families in need, though your choice of instrument may be limited in these cases.

After attending Choose Your Instrument night, Scan the Code to order your Instrument & Care Kit with St. John's or Long & McQuade!

